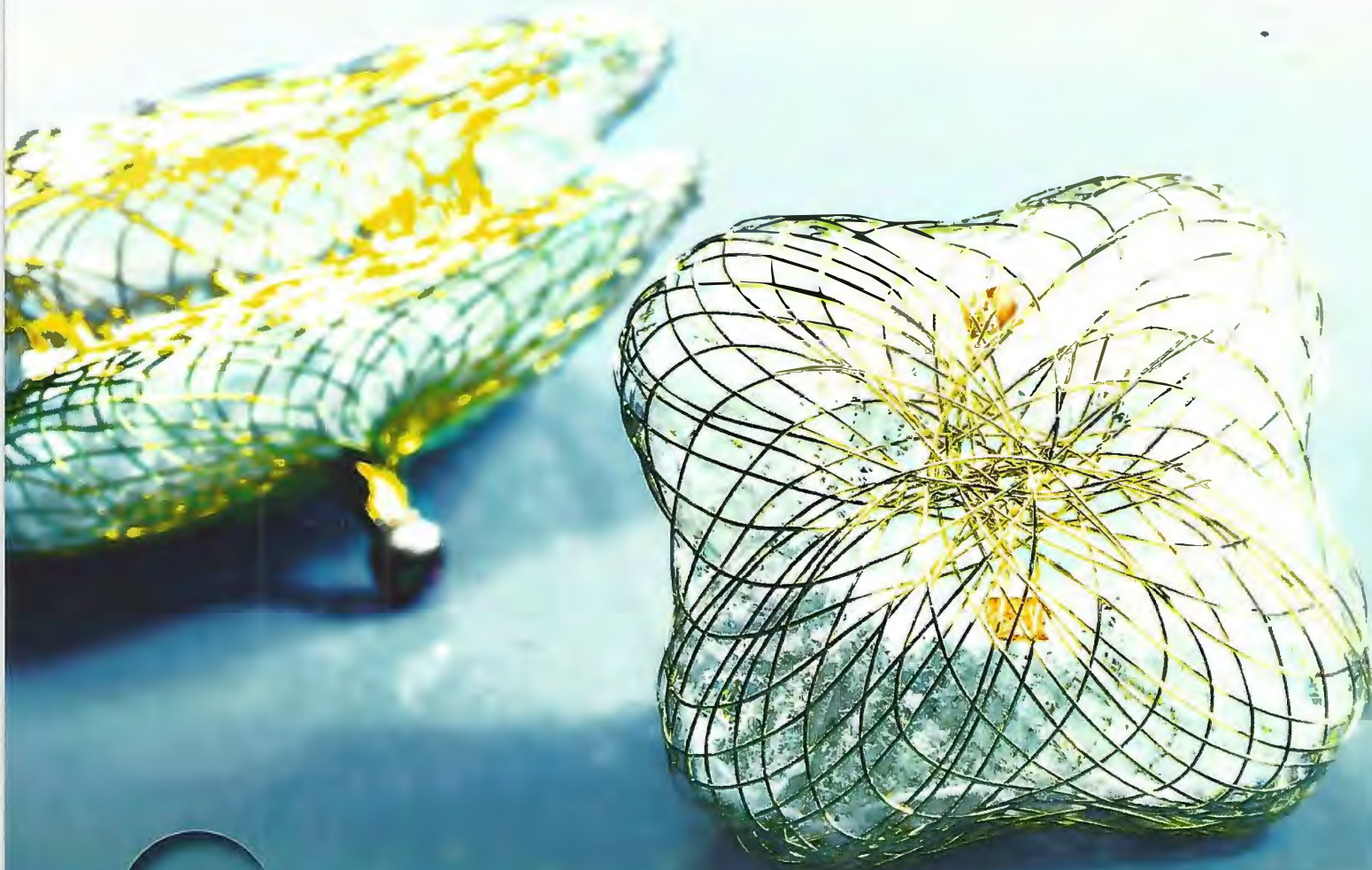


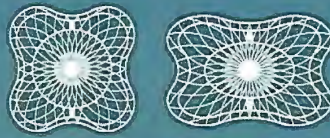
Perfecting Performance



Occlutech Paravalvular Leak Device



PLD



Paravalvular leak closure



PRODUCT FEATURES

The Occlutech PLD is an ideal device for closing paravalvular leaks as it offers a range of unique features

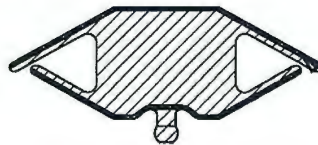
- Optimal positioning by two gold markers.
- Repositionable and fully retrievable.
- User-friendly and easy to use.
- Available with different design options for different PVL morphologies
Rectangular and **Square**.



Waist & Twist

The Occlutech PLD is available with two types of connections between the discs, **W**aist or **T**wist. Example below shown on a Occlutech PLD Square.

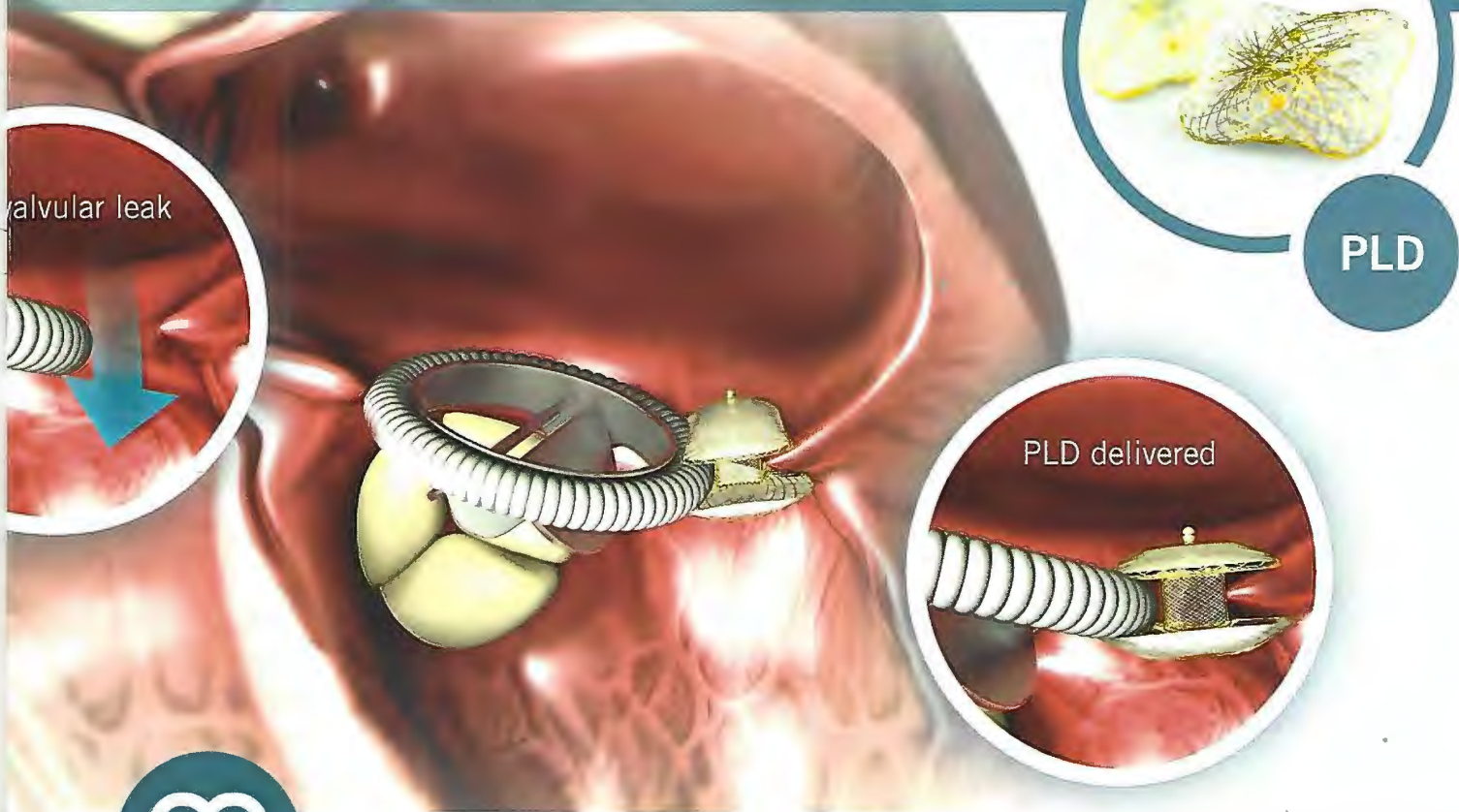
W = Waist



T = Twist

Connection diameter is negligible





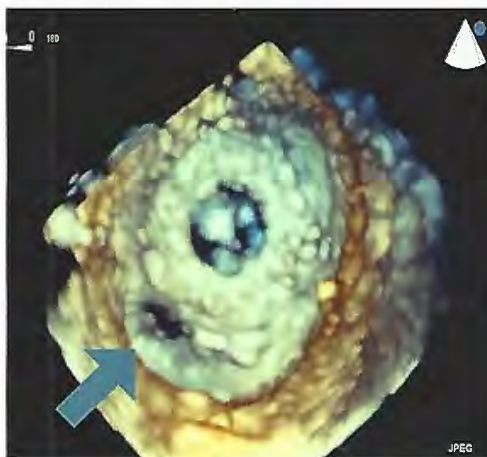
**CLINICAL
BENEFITS**

The Occlutech PLD is specifically designed to meet the needs in paravalvular leak closure. The design of the device allows alignment over the leak and therefore the ability to achieve complete closure. The device can be delivered from various routes (transapical or transfemoral) using small delivery catheters

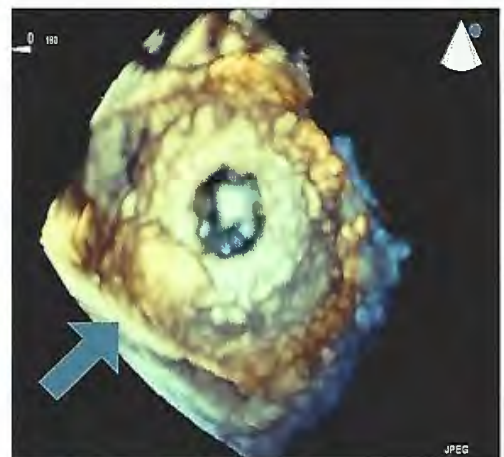
- First CE marked device specifically designed for the closure of the PVL.
- Improved device success.¹
- High success rate in achieving complete closure.²
- No interference with the prosthetic valve leaflets.
- No interference with flow dynamics.³

Content references:

1. Smolka et al, 2016, Transcatheter closure of paravalvular leaks using a paravalvular leak device – a prospective Polish registry
2. Yildirim et al, 2016, A New Specific Device in Transcatheter Prosthetic Paravalvular Leak Closure: A Prospective Two-Center Trial
3. Göktekin et al, 2016, Early experience of percutaneous paravalvular leak closure using a novel Occlutech occluder



Typical half-moon shaped paravalvular leak.



Paravalvular leak closed with Occlutech PLD (61PLD10W).

Occlutech PLD Ordering information

PLD

Occlutech PLD SQUARE_W*

| Article No. | D1 [mm] | D2 [mm] | D3 [mm] | D4 [mm] | D5 [mm] | Min. ID [mm] | ODS** [F] | Pistol Pusher*** | Flex Pusher*** (Item no. 1) |
|-------------|---------|---------|---------|---------|---------|--------------|-----------|------------------|-----------------------------|
| 60PLD04W | 7.5 | 9 | 4 | 11.5 | 13 | 2.21 | 6 | 55PP125L | 50FP100L |
| 60PLD05W | 8.5 | 10 | 5 | 12.5 | 14 | 2.21 | 6 | 55PP125L | 50FP100L |
| 60PLD06W | 9.5 | 11 | 6 | 14 | 16 | 2.21 | 6 | 55PP125L | 50FP100L |
| 60PLD07W | 10.5 | 12 | 7 | 16 | 17 | 2.67 | 7 | 55PP125L | 50FP100L |

Occlutech PLD SQUARE_T*

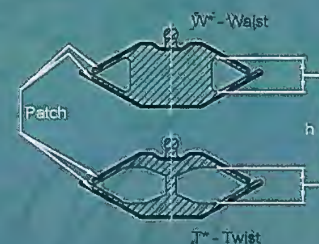
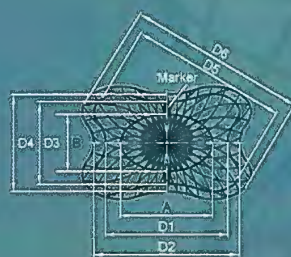
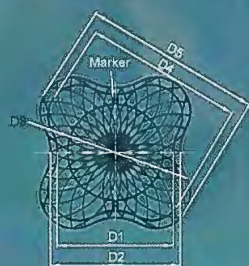
| Article No. | Defect [mm] | D1 [mm] | D2 [mm] | D4 [mm] | D5 [mm] | Min. ID [mm] | ODS** [F] | Pistol Pusher*** | Flex Pusher*** (Item no. 1) |
|-------------|-------------|---------|---------|---------|---------|--------------|-----------|------------------|-----------------------------|
| 62PLD03T | 3 | 7 | 8 | 10 | 11.5 | 2.21 | 6 | 55PP125L | 50FP100L |
| 62PLD05T | 5 | 8.5 | 10 | 12.5 | 14 | 2.21 | 6 | 55PP125L | 50FP100L |
| 62PLD07T | 7 | 11 | 12 | 16 | 17 | 2.67 | 7 | 55PP125L | 50FP100L |

Occlutech PLD RECTANGULAR_W*

| Article No. | AxB [mm] | D1xD3 [mm] | D2xD4 [mm] | D5 [mm] | D6 [mm] | Min. ID [mm] | ODS** [F] | Pistol Pusher*** | Flex Pusher*** (Item no. 1) |
|-------------|----------|------------|------------|---------|---------|--------------|-----------|------------------|-----------------------------|
| 61PLD04W | 4x2 | 8x6 | 9x7 | 10 | 11.5 | 2.21 | 6 | 55PP125L | 50FP100L |
| 61PLD06W | 6x3 | 10x7 | 11x8 | 12.5 | 14 | 2.21 | 6 | 55PP125L | 50FP100L |
| 61PLD08W | 8x4 | 12x8 | 14x10 | 15 | 16.5 | 2.67 | 7 | 55PP125L | 50FP100L |
| 61PLD10W | 10x4 | 14x8 | 16x10 | 17 | 19 | 2.95 | 8 | 55PP125L | 50FP100L |
| 61PLD12W | 12x5 | 16x9 | 17x10 | 19 | 21 | 3.25 | 9 | 55PP165L | 50FP120L |
| 61PLD14W | 14x6 | 19x11 | 21x13 | 22 | 24 | 3.25 | 9 | 55PP165L | 50FP120L |
| 61PLD16W | 16x8 | 20x12 | 23x14 | 24.5 | 26.5 | 3.58 | 10 | 55PP165L | 50FP120L |
| 61PLD18W | 18x10 | 22x14 | 24x16 | 26.5 | 28.5 | 3.58 | 10 | 55PP165L | 50FP120L |

Occlutech PLD RECTANGULAR_T*

| Article No. | Defect [mm] | D1xD3 [mm] | D2xD4 [mm] | D5 [mm] | D6 [mm] | Min. ID [mm] | ODS** [F] | Pistol Pusher*** | Flex Pusher*** (Item no. 1) |
|-------------|-------------|------------|------------|---------|---------|--------------|-----------|------------------|-----------------------------|
| 63PLD05T | 5x3 | 9x6 | 10x8 | 11.5 | 13 | 2.21 | 6 | 55PP125L | 50FP100L |
| 63PLD07T | 7x4 | 11x8 | 12x9 | 14 | 16 | 2.67 | 7 | 55PP125L | 50FP100L |
| 63PLD10T | 10x4 | 14x8 | 16x10 | 17 | 19 | 2.95 | 8 | 55PP125L | 50FP100L |
| 63PLD12T | 12x5 | 16x9 | 17x11 | 19 | 21 | 3.25 | 9 | 55PP165L | 50FP120L |



Square PLD Dimensions:

- D1** - Proximal disc length
- D2** - Distal disc length
- D3** - Waist diameter (Only for Square W*)
- D4** - Diagonal length of proximal disc
- D5** - Diagonal length of distal disc

Rectangular PLD Dimensions:

- D1xD3** - Proximal disc length to width
- D2xD4** - Distal disc length to width
- AxB** - Waist length to width (Only for Rectangular W*)
- D5** - Diagonal length of proximal disc
- D6** - Diagonal length of distal disc

General:

- Min. ID** - Recommended minimum inner dimension for delivery sheath
- ODS** - Occlutech Delivery System**
- h** - Height of the waist (3 mm for all sizes)

Availability subject to regulatory approval.

* W and T represent the types of connections between the discs. W stands for waist and T stands for twist.

** Compatible Occlutech Delivery System (ODS) includes: ODS Version 1, 110cm.

*** Occlutech PLD occluder is compatible with both Flex Pusher and Pistol Pusher, appropriate pusher is provided with the occluder by Occlutech.

Customer Service International

Occlutech, La Cours Gata 2, SE-252 31 Helsingborg, Sweden
 Tel +46 (0)704 33 65 32, Fax +46 (0)42 311 09 70
 order@occlutech.com, www.occlutech.com

Perfecting Performance