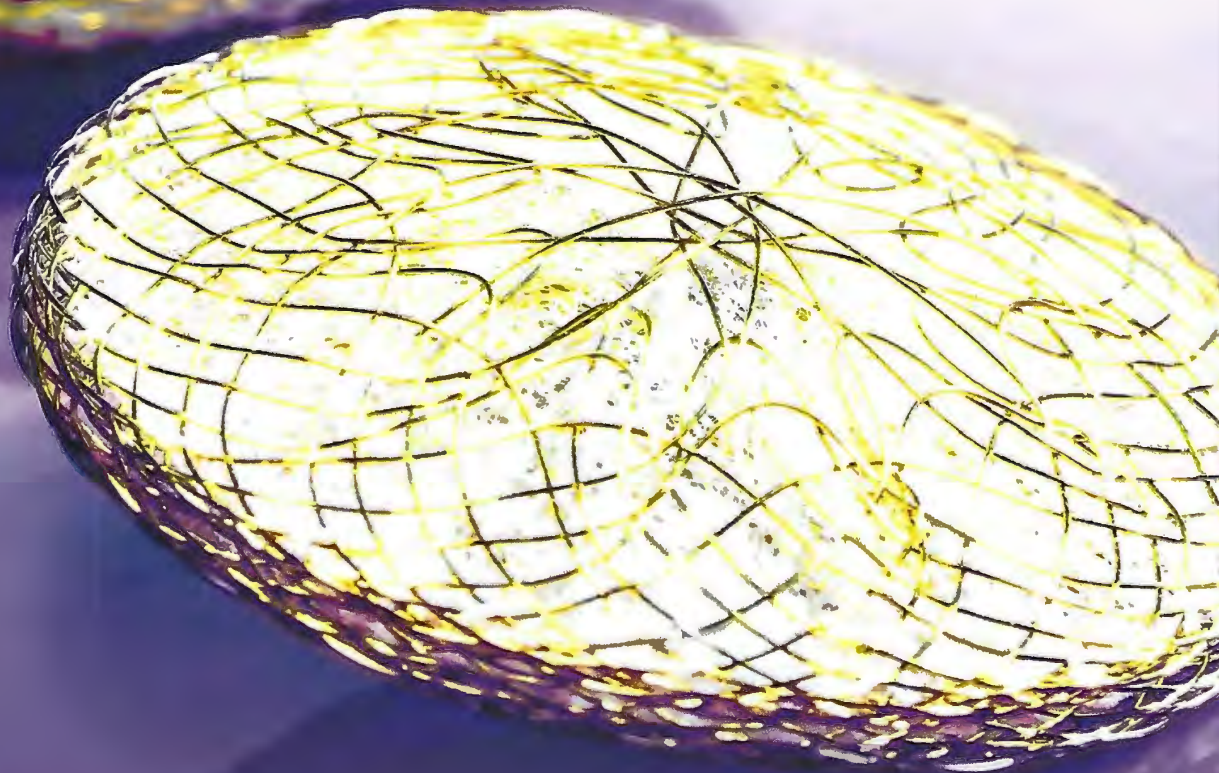


Perfecting Performance



Occlutech Uniform Occluder



UNI

## Designed for excellence and safety



### PRODUCT FEATURES

The Flex II UNI Occluder is specifically designed for closing multi-fenestrated atrial septal defects. Available in four versions with equally sized discs from 17 mm to 40 mm, it provides a wide range of choices

- Optimized braiding pattern and less material at left atrial disc.
- Spunbonded Polyester patch allows for fast endothelialization.
- Titanium oxide covered Nitinol shows the best values of biocompatibility.<sup>1</sup>
- The unique ball-connection safely locks the occluder, while allowing it to freely follow the anatomy without a distorting pull. Once in place it is easy and fast to deliver.

Excellent material and design characteristics



Shapeable Pusher



Soft atraumatic tip

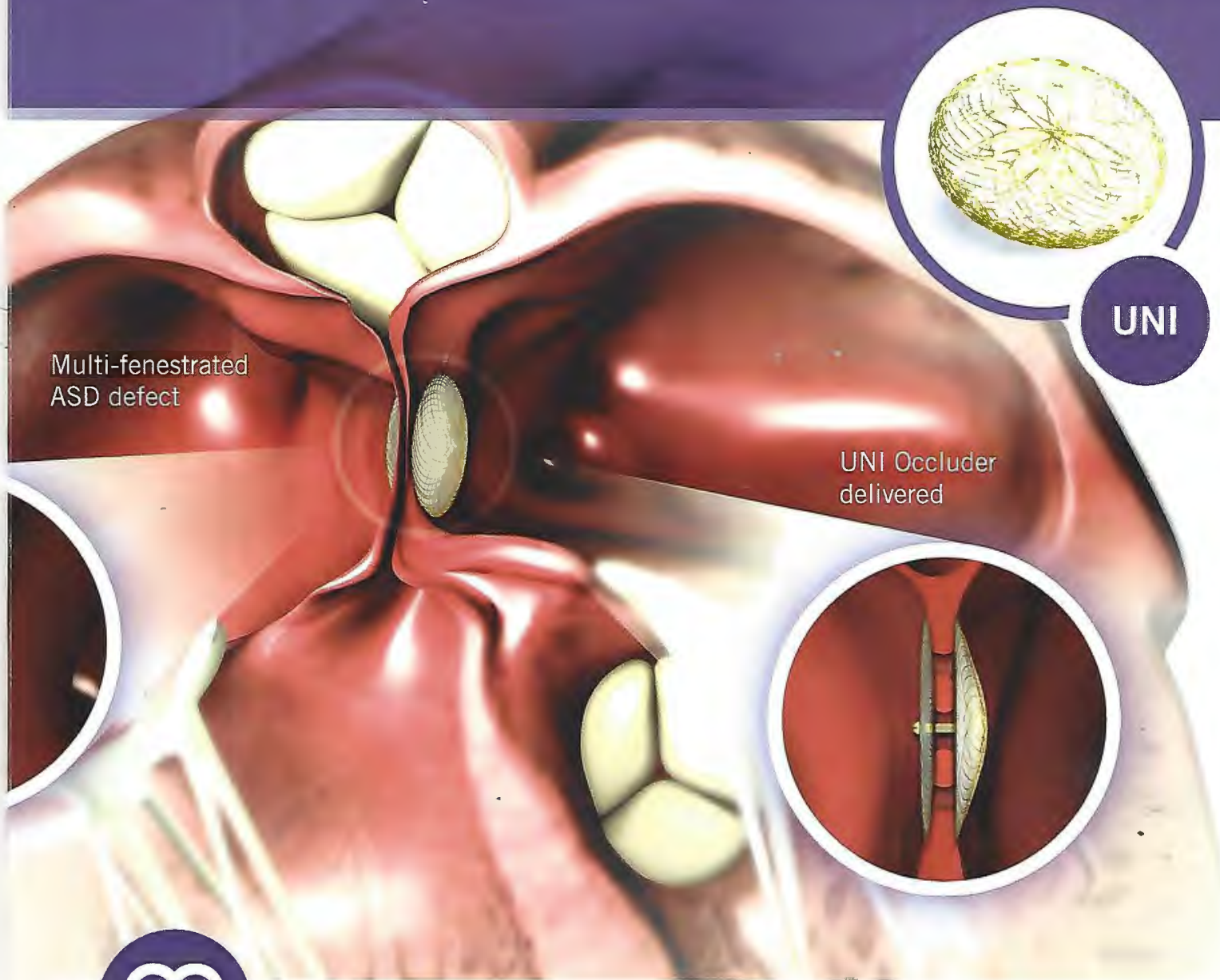
Spunbonded PET-patch



Unique Flex II hub for optimized handling

Unique braiding gives high flexibility and adaptability

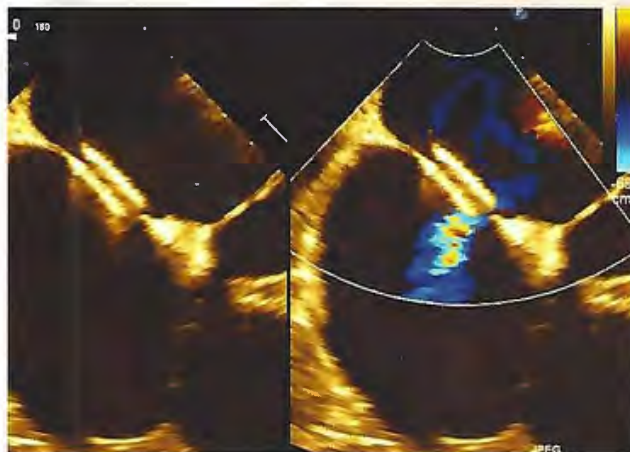




**CLINICAL  
BENEFITS**

The Flex II UNI Occluder represents an alternative to a surgical approach to close complex cases of multi-fenestrated ASDs

- The Flex II UNI Occluder is an optimal choice to close multi-fenestrated ASDs which usually require multiple devices.



Perfect alignment of the Occlutech Flex II UNI Occluder to the septum.



Flex II UNI Occluder under fluoroscopy.

# Occlutech UNI Occluder

## Ordering information



Article No.	Ø Discs [mm]	Defect Size [mm]	Sheath Size* [F]	Flex Pusher II Article No. (colour**)
16UNI17	17/17	D≤8.4	7	51FP100
16UNI24	24/24	D≤11.9	9	51FP120
16UNI28	28.5/28.5	D≤13.9	9	51FP120
16UNI33	33/33	D≤16.4	11	51FP160
16UNI40	40/40	D≤19.5	12	51FP160

Availability subject to regulatory approval.  
 Product data may be subject to change.  
 Contact your Occlutech representative for information.

\* Occlutech Delivery Set (ODS).

\*\* Colour defines Pusher colour.

**Content references**  
 1. Castelman LS et al. Biocompatibility of Nitinol Alloys as an Implant Material. *Journal of Biomedical Materials Research* / 97 6; 10:695.

Customer Service International  
 Occlutech, La Cours Gata 2, SE-252 31 Helsingborg, Sweden  
 Tel +46 (0)704 33 65 32, Fax +46 (0)42 511 09 70  
 order@occlutech.com, [www.occlutech.com](http://www.occlutech.com)