

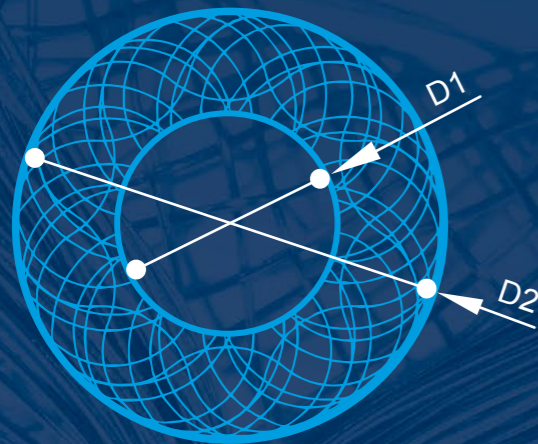
Occlutech® AFR<sup>1</sup>  
Ordering information



Occlutech® AFR<sup>1</sup>

Article No. <sup>1</sup>	Ø D1 (mm)	Height (mm)	Ø D2 (mm)	ODS <sup>2</sup> Size (F)	Flex-Pusher II Article No. (colour <sup>3</sup> )
65AFR04	4	2	16	8	51FP120 ●
65AFR06	6	2	18	10	51FP120 ●
65AFR08	8	2	21	12	51FP120 ●
65AFR10	10	2	23	14	51FP120 ●
65AFR04M	4	5	16	8	51FP120 ●
65AFR06M	6	5	18	10	51FP120 ●
65AFR08M	8	5	21	12	51FP120 ●
65AFR10M	10	5	23	14	51FP120 ●
65AFR04L	4	10	16	8	51FP120 ●
65AFR06L	6	10	18	10	51FP120 ●
65AFR08L	8	10	21	12	51FP120 ●
65AFR10L	10	10	23	14	51FP120 ●

1. Availability subject to regulatory approval. Product data may be subject to change. Contact your Occlutech representative for information.
2. Occlutech Delivery System Size.
3. Colour defines pistol pusher colour.



- D1 - Diameter of the fenestration
- D2 - Diameters of the disks
- H - Height of the waist

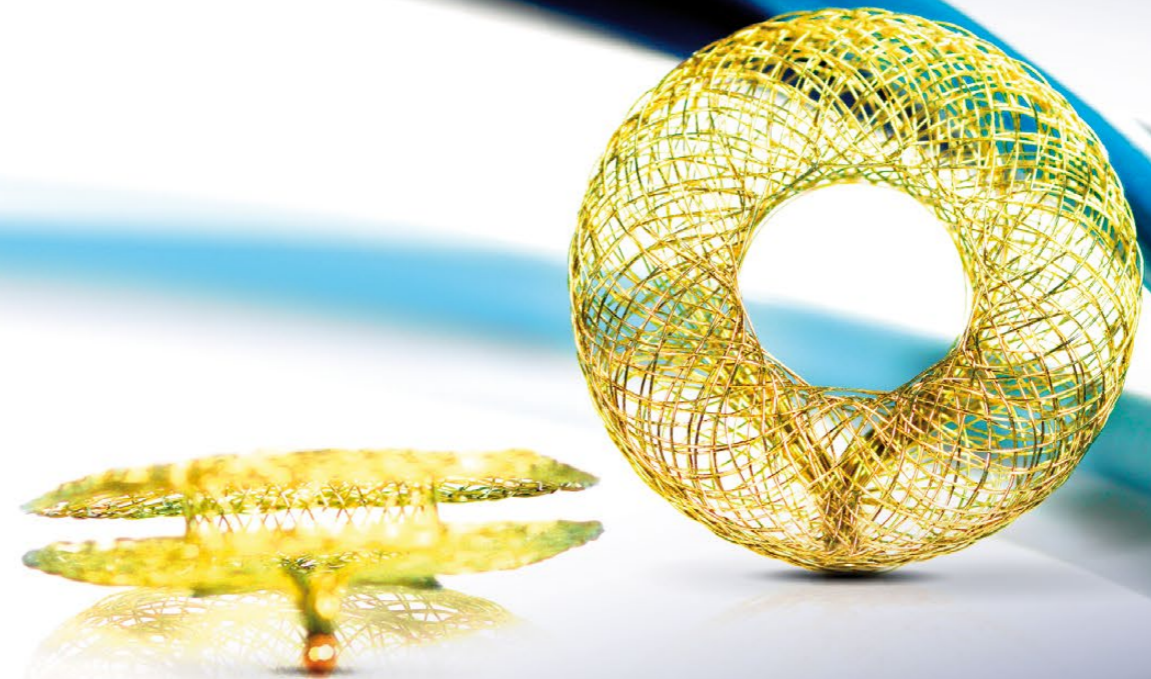
**Customer Service International**  
Occlutech, La Cours Gata 2, SE-252 31 Helsingborg, Sweden  
Tel +46 (0)42 33 65 32, Fax +46 (0)42 311 09 70  
order@occlutech.com, [www.occlutech.com](http://www.occlutech.com)



Perfecting Performance



Occlutech® Atrial Flow Regulator





## Perfecting flow

The Occlutech® Atrial Flow Regulator (AFR) is a novel cardiac implant, intended for patients with heart failure, pulmonary hypertension or congenital heart defects. The AFR device is a break-through innovation for the minimally invasive treatment of patient populations with significant unmet medical needs, or without meaningful treatment alternatives. Occlutech has developed the AFR device using its state of the art nitinol braiding technologies with over half a decade of experience.



AFR



CLINICAL BENEFITS

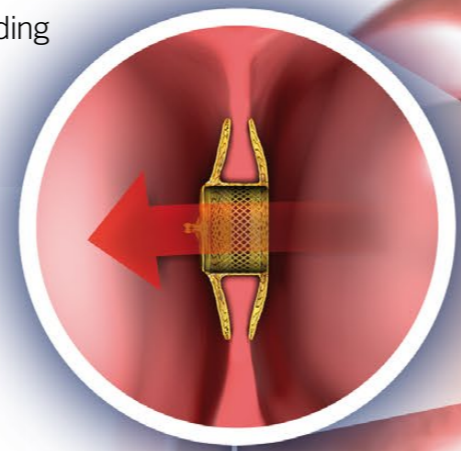
- Improved atrial pressure and hemodynamics
- Reduced shortness of breath
- Improved quality of life and exercise capacity



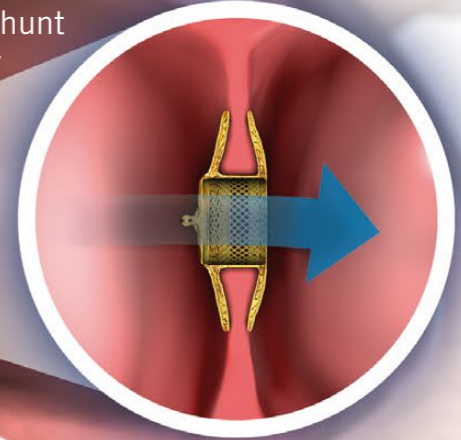
EASE OF USE

- Device implantation technique similar to ASD and PFO
- High flexibility and adaptability with unique braiding
- Repositionable and fully retrievable

The AFR device creates a permanent communication of defined size and allows blood flow across the interatrial septum

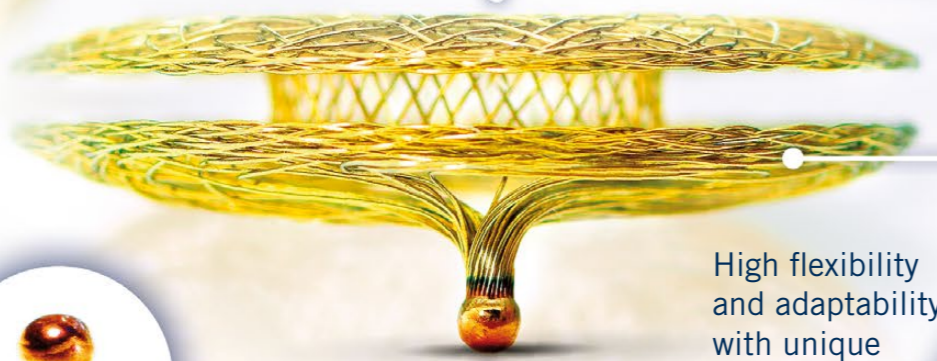


Right to left shunt for pulmonary hypertension



Left to right shunt for left heart failure

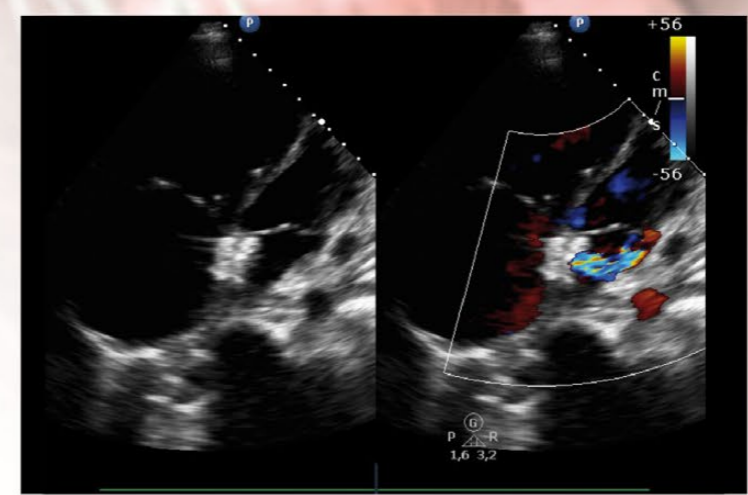
The AFR device will create a permanent communication of a defined diameter and allow blood flow across the interatrial septum. This consequently will decompress the heart and reduce the clinically detrimental congestion of the right or left side of the heart.



High flexibility and adaptability with unique braiding

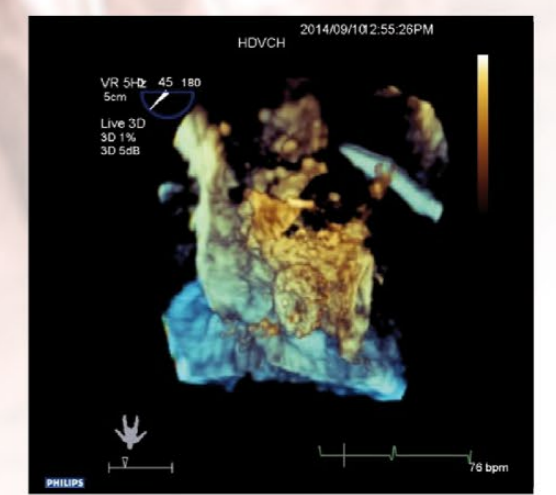


Repositionable and fully retrievable



The Echocardiography image (left) shows placement of the AFR device in the interatrial septum in a patient with severe pulmonary hypertension and right heart failure.

Echocardiography image (right) shows Doppler color flow between the right and the left atrium (right-to-left-shunt) through the AFR device.



Post-deployment 3D TEE shows a well-seated AFR device. Courtesy of J Vettukattil, MD - Congenital Heart Center, Helen DeVos Children's Hospital of Spectrum Health, Grand Rapids, MI, USA